

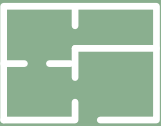
# STEPHEN B. MOOERS VILLAGE

GRANDVIEW AVENUE  
BANGOR, MAINE  
04401



## Floor Plans

One bedroom units varying in size from 586 sq. ft. to 680 sq. ft.



This newly constructed Stephen B Mooers Village apartment complex will provide 39 homes to older adults and features a community room and other common sitting areas, a community garden space, laundry facilities on each floor, an elevator, free Wi-Fi, all utilities included (except for TV & Phone), on-site parking and storage. Conveniently located on Grandview Ave. in Bangor, just around the corner from the Broadway Shopping Plaza and across the street from Prentiss Woods, a public forest trail commonly used for hiking, dog walking and bicycling

## Income Limits

Income Limits Apply



DEVELOPED BY:

**PENQUIS**  
Helping Today • Building Tomorrow

FUNDED IN PART BY:

 **MaineHousing**  
MAINE STATE HOUSING AUTHORITY

## Amenities

All amenities (except TV & Phone) included in rent, community room & garden, onsite laundry and convenient location in Bangor.



## LEASING

For more information on this property, call the Housing Foundation at (207) 866-4634.

**2020**

PROJECT COMPLETED

**Senior**

HOUSING

**39**

TOTAL UNITS

**27**

HANDICAP ACCESSIBLE  
UNITS