



Housing Facts and Affordability Index

Oxford County - 2020

Rental Affordability Index

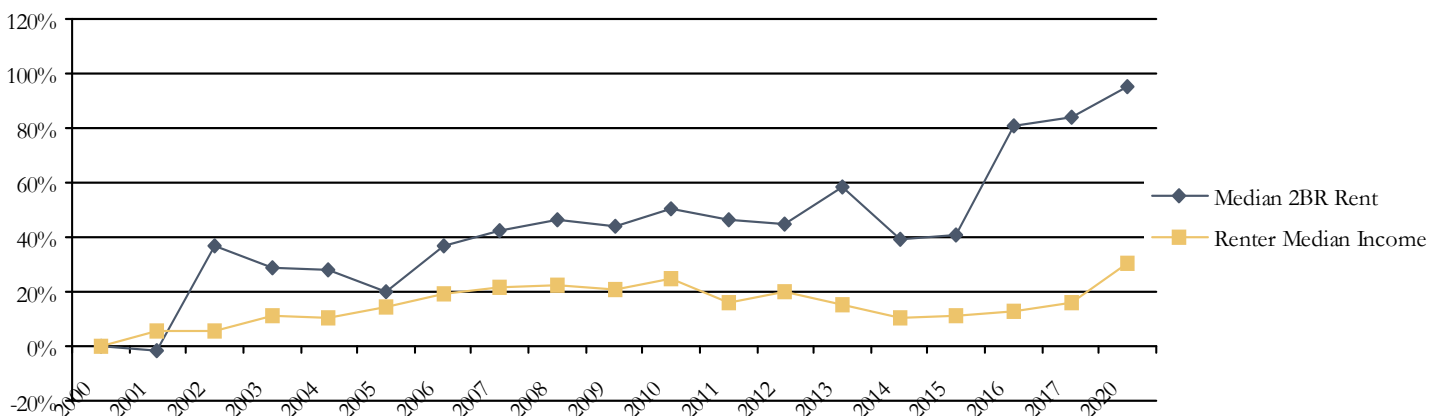
Oxford County	Year	Index	Median 2 BR Rent (with utilities) ¹	Renter Household Median Income ²	Income Needed to Afford Median 2 BR Rent	2 BR Rent Affordable to Median Income
	2016	0.70	\$864	\$24,289	\$34,561	\$607
	2017	0.71	\$878	\$24,830	\$35,101	\$621
	2020	0.75	\$932	\$27,944	\$37,297	\$699
Paris		0.65	\$932	\$24,290	\$37,297	\$607
Oxford		0.73	\$984	\$28,805	\$39,377	\$720
Oxford County		0.75	\$932	\$27,944	\$37,297	\$699
Norway		0.83	\$857	\$28,408	\$34,297	\$710
Maine		0.83	\$1,062	\$35,098	\$42,489	\$877
Rumford		0.91	\$568	\$20,627	\$22,707	\$516

The Rental Affordability Index is the ratio of 2-Bedroom Rent Affordable at Median Renter Income to Median 2-Bedroom Rent. An index of less than 1 means the area is generally unaffordable – i.e., a renter household earning area median renter income could not cover the cost of the median 2-bedroom apartment (including utilities) using no more than 30% of gross income. Note that prior to 2020, average rents were used rather than median rents.

Renter Households Unable to Afford Median 2 Bedroom Rent

Location	Households Unable to Afford Average 2 BR Rent		Total Renter Households	Median 2 BR Rent (with utilities) ¹	Income Needed to Afford Median 2 BR Rent	
	Percent	Number			Annual	Hourly
Oxford	68.4%	199	291	\$984	\$39,377	\$18.93
Paris	66.7%	513	769	\$932	\$37,297	\$17.93
Oxford County	62.5%	3,558	5,692	\$932	\$37,297	\$17.93
Norway	59.0%	422	715	\$857	\$34,297	\$16.49
Maine	57.2%	93,292	162,967	\$1,062	\$42,489	\$20.43
Rumford	54.1%	579	1,071	\$568	\$22,707	\$10.92

Relative Increases in Renter Income and Median 2BR Rent³



Endnotes

- ¹ Source: MaineHousing 2020 Rent Survey. All rent data reported adjusted to include the cost of utilities (heat, hot water, and electricity). Note that prior to 2020, average rents were used rather than median rents.
- ² Source: Claritas Current Year Household Income
- ³ The Y axis is an index defined as the ratio of the annual value to the year 2000 value.