



# Housing Facts and Affordability Index

## York County - 2019

### Homeownership Affordability Index

| York County       | Year | Index | Median Home Price <sup>1</sup> | Median Income <sup>2</sup> | Income Needed to Afford Median Home Price | Home Price Affordable to Median Income |
|-------------------|------|-------|--------------------------------|----------------------------|---|--|
|                   | 2015 | 0.98  | \$215,000                      | \$58,311                   | \$59,503                                  | \$210,693                              |
|                   | 2016 | 0.93  | \$228,900                      | \$60,271                   | \$64,542                                  | \$213,754                              |
|                   | 2017 | 0.83  | \$255,000                      | \$60,328                   | \$72,440                                  | \$212,364                              |
|                   | 2018 | 0.84  | \$275,000                      | \$68,558                   | \$81,893                                  | \$230,220                              |
|                   | 2019 | 0.80  | \$290,000                      | \$66,209                   | \$83,268                                  | \$230,589                              |
| Ogunquit          |      | 0.40  | \$663,500                      | \$70,161                   | \$174,586                                 | \$266,641                              |
| Kennebunkport     |      | 0.50  | \$655,000                      | \$87,069                   | \$175,040                                 | \$325,812                              |
| Old Orchard Beach |      | 0.52  | \$317,750                      | \$48,746                   | \$93,706                                  | \$165,293                              |
| York              |      | 0.63  | \$477,100                      | \$83,053                   | \$131,281                                 | \$301,830                              |
| Biddeford         |      | 0.63  | \$268,000                      | \$52,610                   | \$82,917                                  | \$170,044                              |
| Kittery           |      | 0.65  | \$404,450                      | \$75,452                   | \$116,924                                 | \$260,995                              |
| Kennebunk         |      | 0.65  | \$379,900                      | \$71,181                   | \$108,765                                 | \$248,625                              |
| Arundel           |      | 0.66  | \$343,000                      | \$65,134                   | \$99,006                                  | \$225,653                              |
| Saco              |      | 0.69  | \$319,000                      | \$67,582                   | \$97,382                                  | \$221,383                              |
| Parsonsfield      |      | 0.70  | \$207,500                      | \$42,908                   | \$61,031                                  | \$145,882                              |
| Wells             |      | 0.72  | \$351,250                      | \$68,548                   | \$95,661                                  | \$251,697                              |
| Alfred            |      | 0.73  | \$275,000                      | \$58,817                   | \$80,576                                  | \$200,737                              |
| Eliot             |      | 0.75  | \$380,000                      | \$81,541                   | \$109,109                                 | \$283,987                              |
| Sanford           |      | 0.76  | \$199,900                      | \$47,416                   | \$62,636                                  | \$151,327                              |
| York County       |      | 0.80  | \$290,000                      | \$66,209                   | \$83,268                                  | \$230,589                              |
| Cornish           |      | 0.80  | \$192,500                      | \$44,401                   | \$55,510                                  | \$153,975                              |
| Shapleigh         |      | 0.82  | \$260,000                      | \$59,322                   | \$72,298                                  | \$213,336                              |
| Newfield          |      | 0.86  | \$205,500                      | \$49,071                   | \$56,986                                  | \$176,957                              |
| Lyman             |      | 0.87  | \$294,000                      | \$72,121                   | \$82,516                                  | \$256,965                              |
| Acton             |      | 0.88  | \$262,500                      | \$65,296                   | \$74,237                                  | \$230,885                              |
| Maine             |      | 0.90  | \$225,000                      | \$59,575                   | \$66,044                                  | \$202,959                              |
| Berwick           |      | 0.93  | \$270,500                      | \$74,616                   | \$80,422                                  | \$250,972                              |
| Dayton            |      | 0.93  | \$309,900                      | \$84,334                   | \$90,586                                  | \$288,511                              |
| Limington         |      | 0.94  | \$242,500                      | \$63,103                   | \$67,464                                  | \$226,825                              |
| Limerick          |      | 0.95  | \$217,000                      | \$60,026                   | \$63,431                                  | \$205,352                              |
| Lebanon           |      | 0.95  | \$250,000                      | \$69,149                   | \$72,622                                  | \$238,045                              |
| Hollis            |      | 0.97  | \$237,000                      | \$64,643                   | \$66,526                                  | \$230,291                              |
| South Berwick     |      | 0.98  | \$289,000                      | \$86,079                   | \$87,831                                  | \$283,234                              |
| Waterboro         |      | 0.99  | \$230,000                      | \$66,170                   | \$66,976                                  | \$227,232                              |
| North Berwick     |      | 1.07  | \$265,000                      | \$79,931                   | \$74,480                                  | \$284,393                              |
| Buxton            |      | 1.12  | \$246,500                      | \$78,899                   | \$70,161                                  | \$277,199                              |

The Homeownership Affordability Index is the ratio of Home Price Affordable at Median Income to Median Home Price. An index of less than 1 means the area is generally unaffordable - i.e., a household earning area median income could not cover the payment on a median priced home (30 year mortgage, taxes and insurance) using no more than 28% of gross income.

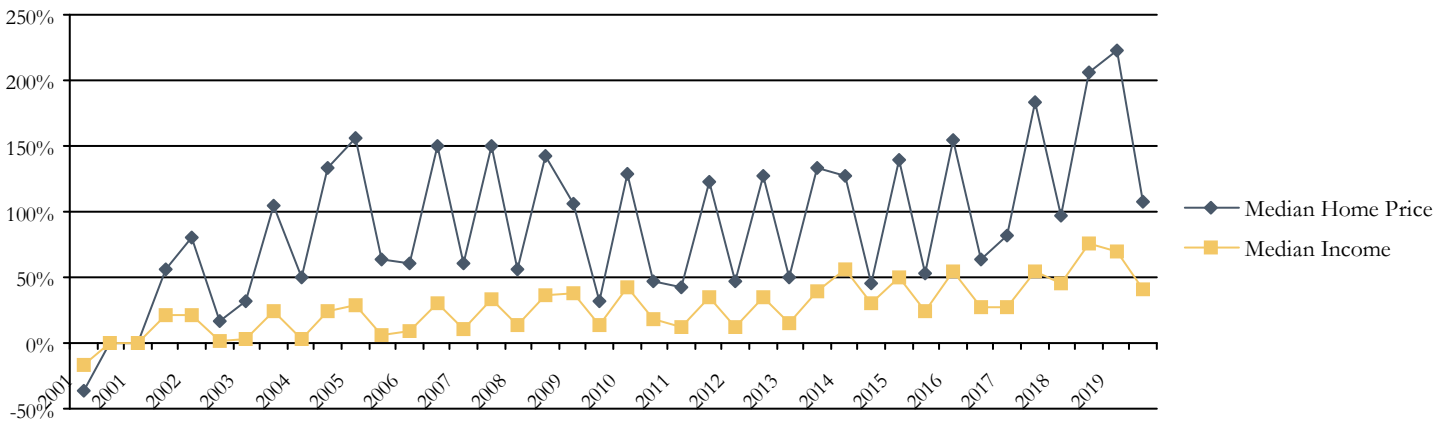
## Households Unable to Afford Median Home

| <u>Location</u>   | Households<br>Unable to Afford<br>Median Home |         | Total<br>Households | Median<br>Home Price <sup>1</sup> | Income Needed<br>to Afford<br>Median Home |         |
|-------------------|---|---------|---------------------|-----------------------------------|---|---------|
|                   | Percent                                       | Number  |                     |                                   | Annual                                    | Hourly  |
| Old Orchard Beach | 80.2%   | 3,931   | 4,900               | \$317,750                         | \$93,706                                  | \$45.05 |
| Biddeford         | 73.7%   | 6,461   | 8,766               | \$268,000                         | \$82,917                                  | \$39.86 |
| Arundel           | 71.8%   | 1,199   | 1,671               | \$343,000                         | \$99,006                                  | \$47.60 |
| Saco              | 71.1%   | 5,882   | 8,275               | \$319,000                         | \$97,382                                  | \$46.82 |
| Wells             | 69.3%   | 3,216   | 4,638               | \$351,250                         | \$95,661                                  | \$45.99 |
| Shapleigh         | 66.3%   | 752     | 1,134               | \$260,000                         | \$72,298                                  | \$34.76 |
| Parsonfield       | 65.5%   | 541     | 825                 | \$207,500                         | \$61,031                                  | \$29.34 |
| Alfred            | 65.2%   | 821     | 1,258               | \$275,000                         | \$80,576                                  | \$38.74 |
| Ogunquit          | 64.5%   | 321     | 498                 | \$663,500                         | \$174,586                                 | \$83.94 |
| Kennebunk         | 64.1%   | 3,360   | 5,243               | \$379,900                         | \$108,765                                 | \$52.29 |
| Kittery           | 63.4%   | 2,829   | 4,462               | \$404,450                         | \$116,924                                 | \$56.21 |
| Dayton            | 62.5%   | 481     | 769                 | \$309,900                         | \$90,586                                  | \$43.55 |
| Eliot             | 62.5%   | 1,666   | 2,666               | \$380,000                         | \$109,109                                 | \$52.46 |
| Maine             | 62.2%   | 354,985 | 570,917             | \$225,000                         | \$66,044                                  | \$31.75 |
| York County       | 62.0%   | 53,452  | 86,255              | \$290,000                         | \$83,268                                  | \$40.03 |
| Sanford           | 61.9%   | 5,290   | 8,543               | \$199,900                         | \$62,636                                  | \$30.11 |
| Limington         | 59.6%   | 919     | 1,542               | \$242,500                         | \$67,464                                  | \$32.43 |
| York              | 59.1%   | 3,399   | 5,750               | \$477,100                         | \$131,281                                 | \$63.12 |
| Kennebunkport     | 58.1%   | 968     | 1,666               | \$655,000                         | \$175,040                                 | \$84.15 |
| Waterboro         | 58.1%   | 1,789   | 3,080               | \$230,000                         | \$66,976                                  | \$32.20 |
| Acton             | 57.8%   | 658     | 1,139               | \$262,500                         | \$74,237                                  | \$35.69 |
| Lyman             | 57.3%   | 1,047   | 1,827               | \$294,000                         | \$82,516                                  | \$39.67 |
| Cornish           | 56.8%   | 365     | 643                 | \$192,500                         | \$55,510                                  | \$26.69 |
| Hollis            | 56.7%   | 980     | 1,728               | \$237,000                         | \$66,526                                  | \$31.98 |
| Newfield          | 55.4%   | 380     | 686                 | \$205,500                         | \$56,986                                  | \$27.40 |
| Lebanon           | 54.7%   | 1,282   | 2,344               | \$250,000                         | \$72,622                                  | \$34.91 |
| Berwick           | 53.7%   | 1,618   | 3,012               | \$270,500                         | \$80,422                                  | \$38.66 |
| Limerick          | 53.3%   | 629     | 1,179               | \$217,000                         | \$63,431                                  | \$30.50 |
| South Berwick     | 50.9%   | 1,465   | 2,875               | \$289,000                         | \$87,831                                  | \$42.23 |
| Buxton            | 47.3%   | 1,543   | 3,261               | \$246,500                         | \$70,161                                  | \$33.73 |
| North Berwick     | 46.6%   | 873     | 1,875               | \$265,000                         | \$74,480                                  | \$35.81 |

## Unattainable Homes as a Percentage of Homes Sold

| <u>Location</u>   | <u>Percentage of Unattainable Homes</u> | <u>Affordable Homes Sold</u> | <u>Unattainable Homes Sold</u> |
|-------------------|---|------------------------------|--------------------------------|
| Ogunquit          | 98.0%                                   | 1                            | 48                             |
| Kennebunkport     | 93.0%                                   | 5                            | 66                             |
| Biddeford         | 92.4%                                   | 19                           | 230                            |
| York              | 92.1%                                   | 20                           | 233                            |
| Old Orchard Beach | 92.0%                                   | 8                            | 92                             |
| Arundel           | 89.1%                                   | 5                            | 41                             |
| Saco              | 87.3%                                   | 34                           | 233                            |
| Kittery           | 86.6%                                   | 16                           | 103                            |
| Wells             | 86.2%                                   | 32                           | 200                            |
| Kennebunk         | 85.6%                                   | 28                           | 167                            |
| Eliot             | 82.5%                                   | 14                           | 66                             |
| Sanford           | 81.2%                                   | 61                           | 263                            |
| Shapleigh         | 73.8%                                   | 17                           | 48                             |
| Cornish           | 73.7%                                   | 5                            | 14                             |
| Parsonsfield      | 73.3%                                   | 8                            | 22                             |
| Acton             | 72.6%                                   | 20                           | 53                             |
| York County       | 71.6%                                   | 896                          | 2,261                          |
| Alfred            | 69.0%                                   | 13                           | 29                             |
| Newfield          | 64.3%                                   | 15                           | 27                             |
| Dayton            | 62.5%                                   | 6                            | 10                             |
| Hollis            | 61.3%                                   | 29                           | 46                             |
| Berwick           | 61.1%                                   | 44                           | 69                             |
| Lebanon           | 60.9%                                   | 27                           | 42                             |
| South Berwick     | 60.2%                                   | 35                           | 53                             |
| Lyman             | 60.0%                                   | 26                           | 39                             |
| Limington         | 59.3%                                   | 22                           | 32                             |
| Limerick          | 58.4%                                   | 32                           | 45                             |
| Maine             | 56.3%                                   | 8,015                        | 10,321                         |
| Waterboro         | 55.8%                                   | 76                           | 96                             |
| North Berwick     | 46.4%                                   | 37                           | 32                             |
| Buxton            | 32.0%                                   | 70                           | 33                             |

## Relative Increases in Income and Home Price



## Demographics

|            | <u>% Change</u><br><u>1990-2019</u> | <u>1990</u> | <u>2015</u> | <u>2016</u> | <u>2017</u> | <u>2018</u> | <u>2019</u> |
|------------|-------------------------------------|-------------|-------------|-------------|-------------|-------------|-------------|
| Population | 25.2%                               | 164,587     | 200,230     | 202,118     | 202,300     | 203,695     | 206,126     |
| Households | 39.5%                               | 61,848      | 83,126      | 84,098      | 84,322      | 85,089      | 86,255      |

## Endnotes

<sup>1</sup>This data is derived from Maine Real Estate Information System ("MREIS") and MREIS reserves all rights including all proprietary rights in the data set forth herein and any use or publication of this data or any portion thereof without the express written consent of MREIS is prohibited. Any reproduction, sale or exchange of this data, in whole or in part, is likewise prohibited. All rights to the data remain the exclusive property of MREIS to the extent owned by MREIS.

<sup>2</sup>Source: Claritas Current Year Household Income

<sup>3</sup>The Y axis is an index defined as the ratio of the annual value to the year 2000 value.